



Installation Instructions – Slipper Eliminator SCX10 II (0820-scx2)

This guide will help you install our slipper eliminator on your Axial SCX10-II.
These instructions were made based off of the AX90046 kit with a 2 speed kit installed.
If you have a different version you may need to source additional parts.
So, we suggest you read through these instructions before starting assembly.

Installation of this kit is basic and can be done with regular hand tools.

Parts included in kit:

A. Spur Hub



B. Shaft



C. Screws



These instructions were created for the “SCX10 II Transmission” found in the Axial AX90046 KIT. This transmission may appear in other kit numbers as well. If you have the “AX10 Transmission” (found in the original SCX10 and SCX10 II RTR) you need our other Slipper Eliminator, part# 0820.

There are MANY compatible spur gears that can be used with this kit. The basic mounting pattern is 3 holes, so if you spur gear has an 8 hole pattern (like an HPI 6987) it will NOT work. Spur gears we have tested to work are: Duratrax dtxc9397*, Kimbrough #148, Axial AX30672, Traxxas 4687, Traxxas 3166, Robinson 1558. These instructions were created with the Duratrax unit as it is 56t spur gear like the stock unit.

Installation requires a good bit of disassembly of the transmission. So this is a great time to install our 2-Speed kit!



1. Remove the transmission from the vehicle.



2. Remove the transfer case from the transmission so that you are left with just the main transmission.





3. Remove the spur gear cover (AX31378 **2**) and set aside.



3. Remove the M4 nut that is holding the spring (AX30413), slipper plates (AX31026), and spur gear on the Top Shaft (AX31414). These will not be reused except for the M4 nut.



4. Separate the 2 halves of the transmission and remove the internals.



5. Swap all of the parts from your original top shaft on to the new **Shaft (C)**.





6. Reassemble the internals with the Shaft (C) in place.



7. Then reassemble the 2 halves of the transmission.





8. Attach your new spur gear (not included in the kit) to **Spur Hub (A)** using the supplied **Screws (C)**.



9. If the holes do not line up, rotate the spur gear to the next hole. The **Spur Hub (A)** has 2 alternating patterns which are VERY close in diameter.





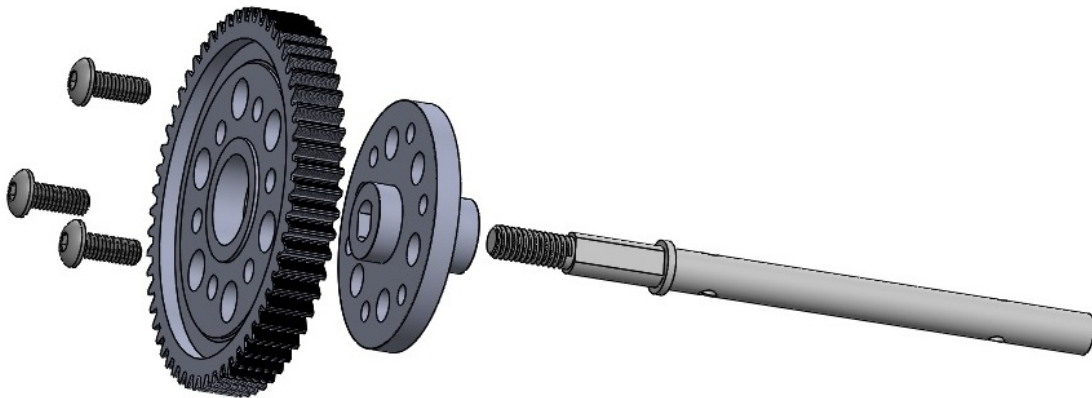
10. Slide the assembled gear & **Spur Hub (A)** onto portion of **B. Shaft** that sticks out of the transmission.



11. Finish installation by reinstalling everything else you removed in the reverse order.



Fully assembled view of kit with Spur Gear (not included):



Troubleshooting

Issue: Spur gear does not line up with the holes on Spur Hub (A).

Solution: Try to rotate the spur gear to the next set of mounting holes. If you still are not able to line up the holes, you may have an incompatible spur gear.

Issue: Spur gear does not line up with the pinion.

Solution: Ensure you assembled unit mimics the above fully assembled view and try to adjust the pinion depth. If your spur gear still does not line up, try to flip it and/or the spur hub.

Other issues?

Submit a ticket through our website (on the contact us tab at the top of the site) and we will do our best to help you get your kit up and running!